



# Integrated security solution

with CO-250, AD-250 in Vanderbilt SMS Select

**VANDERBILT**



## Overview

SMS Select software is ideal for campus environments that are seeking added security, convenience and efficiency. At a fraction of the cost of a networked solution, SMS Select delivers integrated access control, digital video and allows you to design and create badges. Future migration to SMS Premier or Enterprise level software is available if your needs change.

SMS Select supports AD Series and CO Series standalone locks. The AD-250 and CO-250 are a cost effective solution for large campuses. Schlage electronic locks allow you to have better control of your key system and minimize costs associated with re-keying. User rights for the AD-250 and CO-250 are encoded on the magnetic stripe credential. This allows you to easily add users without touring the locks.

The innovative integrated design of the AD Series and CO Series saves you time and money on installation. It combines components typically found around the door, such as the credential reader, request-to-exit switch and door position switch. Therefore there are no wires to run and labor is greatly reduced. An easy-to-use handheld device transfers information from the system to the lock. The handheld device can also be used to retrieve audits from devices.

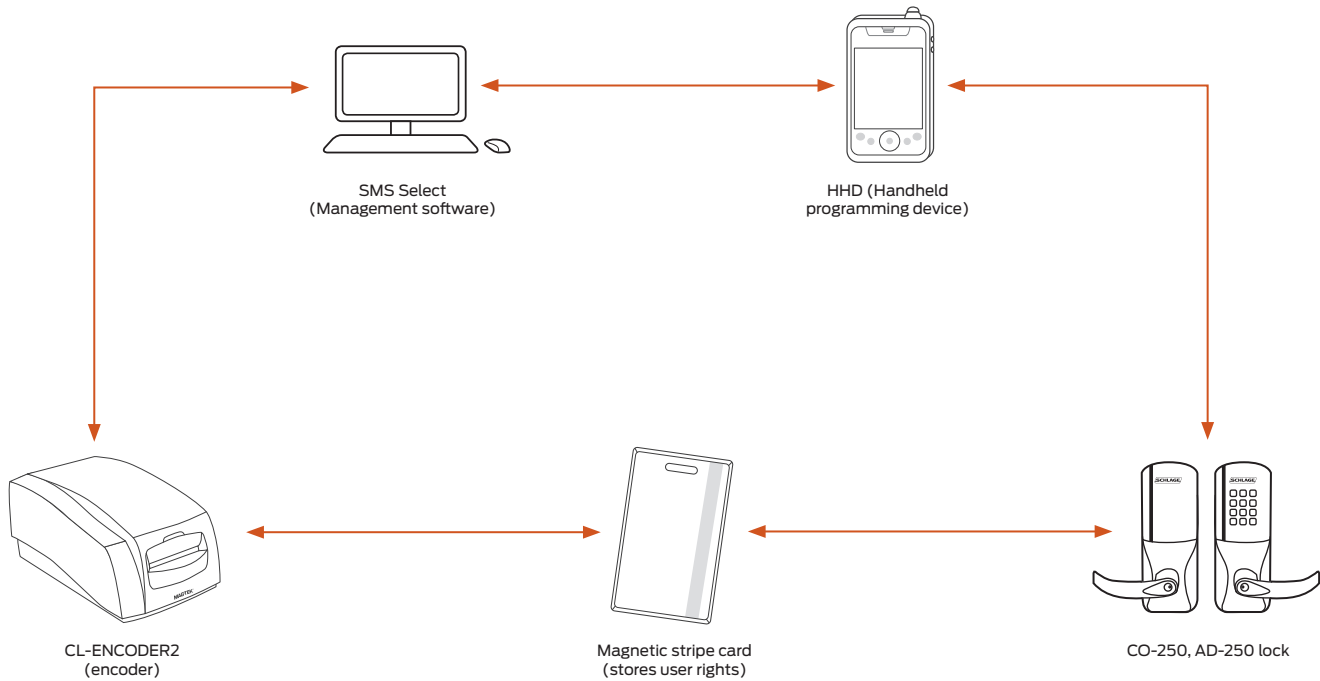
Need help deciding between the AD Series and CO Series? The AD Series is the ideal solution if you want flexibility. The modular design of the AD Series allows you to upgrade from standalone to networked if your needs change in the future. The AD Series also allows you to upgrade credential readers. The CO Series is preferable if you do not expect your needs to change. CO Series options are factory orderable rather than upgradable like the AD Series.

## System Capabilities Summary

- SMS Select
  - Supports an unlimited number of users
  - Supports up to 4000 audits with the CO-250 or 10,000 audits with the AD-250
  - Supports up to 16 times zones and up to 32 holidays
  - Set up to 8 auto unlock schedules per system (up to 8 per lock)
- AD-250
  - Upgradable credential and communication modules
  - Available with choice of magnetic stripe or magnetic stripe plus keypad readers
  - Classroom/Storeroom, Office, Apartment and Privacy functions
  - UL 294 listed, ANSI/BHMA A156.25 and ANSI/BHMA Grade 1 certified
- CO-250
  - Available with choice of magnetic stripe or magnetic stripe plus keypad readers
  - Classroom/Storeroom, Office and Privacy functions
  - UL 294 listed, ANSI/BHMA A156.25 and ANSI/BHMA Grade 1 certified

# System diagram

Computer programmable user rights  
on the magnetic stripe credential  
CO-250 / AD-250



## Benefits

- Cost-effective, simple means of controlling access within your facility.
- Online solutions available if your needs should change.
- New users or access points can be entered into the system in seconds.
- Comprehensive reporting on audit trails retrieved, access attempts, etc.

## Complete Your System

- The Schlage Utility Software (SUS) on the Handheld Programming Device (HHD) provides an easy way to retrieve audits and transfer information between your access control software and electronic locks.
- The combo proximity keyfobs with iButton® option is available which allows you to manage proximity and iButton® technologies in the same facility.
- Schlage offers many contactless, keypad and magnetic stripe readers that are compatible with the CT5000.
- We offer a complete portfolio of credentials including smart, proximity and magnetic stripe. Multi-technology credentials are also available.



NOTE: Complete specifications are detailed on individual data sheets which can be found on in the Electronic Access Control Catalog available on <http://epub.allegion.com/eac>.

---

**System capabilities:**

	Integrated standalone electronic locks	
	CO-250	AD-250
<b>System capacity</b>		
Number of doors	Unlimited	Unlimited
Number of users/audits	4,000	10,000
Holidays	32	32
1st person in	Yes	Yes
Time zones	16	16
<b>Readers</b>		
Magnetic stripe card	Yes	Yes
Magnetic stripe + keypad	Yes	Yes
<b>Status monitors</b>		
Mechanical key override (ATK)	Yes - software	Yes - software
Battery status (normal, low, critical)	Yes - SUS	Yes - SUS
Battery voltage level	Yes - SUS	Yes - SUS
<b>Lock functions</b>		
Classroom/storeroom	Yes	Yes
Office/toggle	Yes	Yes
Privacy	Yes	Yes
Apartment	No	Yes
<b>Credential attributes</b>		
Normal credential	Yes	Yes
Toggle credential	Yes	Yes
Pass through credential	Yes	Yes
Freeze credential	Yes	Yes

**Legend**

Yes - software: This capability is monitored and reported in the SMS Software audit

Yes - SUS: This capability is monitored by the SUS

## Available AD-250 readers



Magnetic stripe (swipe)  
■ KEYPAD

Magnetic stripe (swipe)

## Available CO-250 readers



Magnetic stripe (swipe)

Magnetic stripe (swipe)  
■ KEYPAD

## Compatibility

See lever and cylinder compatibility data sheet (010432).

### Exit device compatibility

Exit device compatibility	Rim	SVR	CVR/CVC	Mortise
Von Duprin 98/99 and 98/99XP	■	■	■	■
Von Duprin 22/22F	■	■		
Falcon® 25	■			
Corbin Russwin® 5000	■			
Precision™ 21 <sup>1</sup>	■			
Yale® 7000	■			
Dorma® 9300	■			
Sargent® 80 <sup>2</sup>	■			

1 2100 converts to 21 with Precision's BP21 kit

2 Narrow design & reversible rim exits not compatible

## Lever styles

Standard cylinders shown, SFIC and FSIC also available.



Sparta



Rhodes



Athens



Tubular

## Finishes

Warm tone finishes



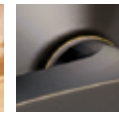
605  
Bright brass



606  
Satin brass



612  
Satin bronze



643e  
Aged bronze

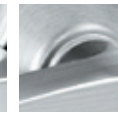
Cool tone finishes



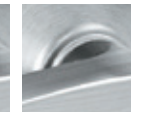
619  
Satin nickel



625  
Bright chrome



626  
Satin chrome



626AM  
Satin chrome with antimicrobial

Allegion, the Allegion logo, Schlage, the Schlage logo, Von Duprin, Falcon, and aptiQ are trademarks of Allegion plc, its subsidiaries and/or affiliates in the United States and other countries. All other trademarks are the property of their respective owners.

## About Allegion

Allegion (NYSE: ALLE) is a global pioneer in the field of safety and security. We keep people and their property safe, wherever they are, bringing together simple solutions and advanced technology. Allegion is a \$2 billion company, with products sold in almost 130 countries.

For more, visit [www.allegion.com](http://www.allegion.com).

aptiQ ■ LCN ■ SCHLAGE ■ STEELCRAFT ■ VON DUPRIN



ALLEGION™

© 2015 Allegion  
005254, Rev. 08/15  
[www.allegion.com/us](http://www.allegion.com/us)